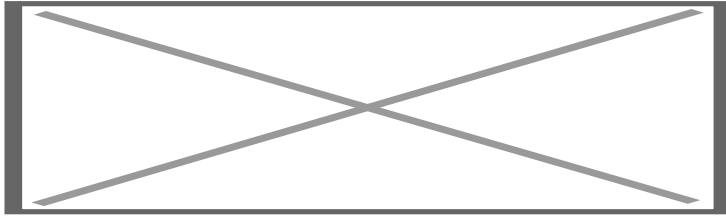


Multimedia video interface Opel NAVI 4.0 IntelliLink - 7"

Art. Nr: IF-OPEL-R4V2



DESCRIPTION

General

The NavInc NAVconnect interfaces allow for connecting video sources to the original Intellilink systems of Opel & Chevrolet.

The interface is equipped with various options such as; 1* LVDS input, 1* Video input, 1* Front camera input, 1* Rear camera input

Example video

Features

- 1x LVDS input (to connectd NAVplay Android)
- 1x Video input
- 1x Rear camera input with iPAS (dynamic parking lines)
- 1x Front camera input (with auto switch OFF)
- Original button support
- Original touchscreen support for NAVplay Android
- Picture while driving
- 2 Year warranty & Support

EXCLUSIVE INTERFACE FEATURES

Features:

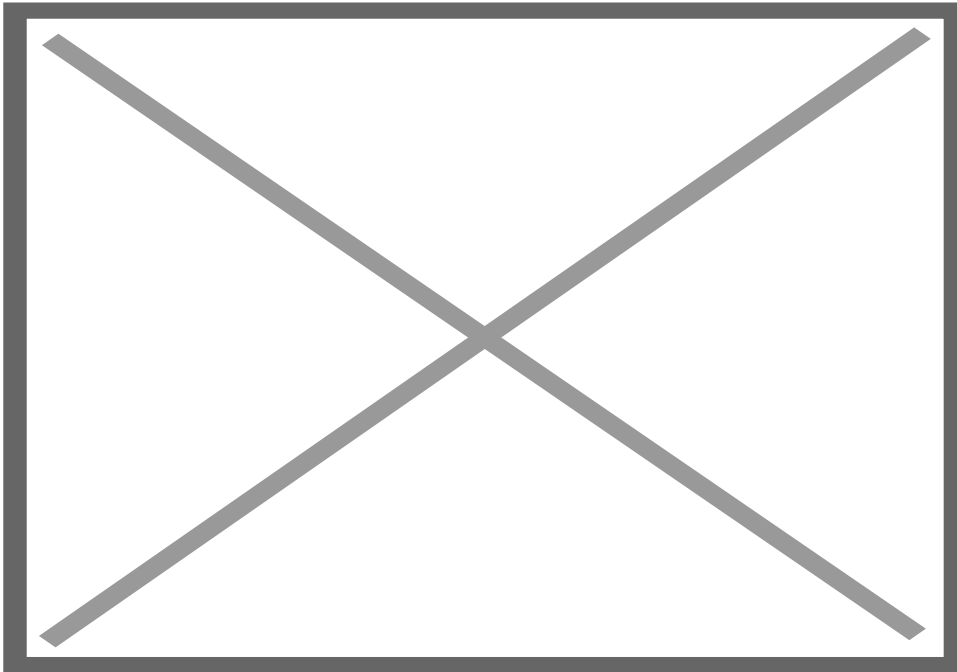
- 2* AV input
- Reverse Camera input

- Front camera input
- Image retention while driving
- Adjustable parking lines
- OSD menu

Activation via OEM

Activation interface via original button:

STEERING WHEEL



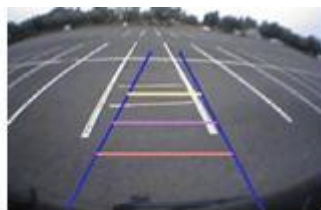
CAMERA FEATURES

Rear camera input with Parking guidelines

Rear camera input with parking guidelines option.

The guidelines makes it much easier to determine the distance to the object you are driving towards.

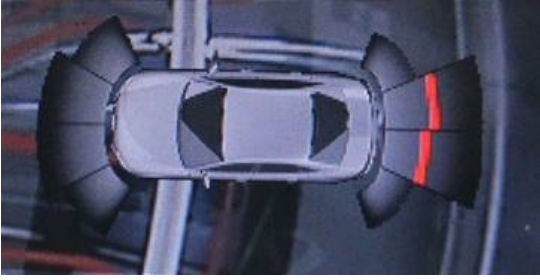
The guidelines are adjustable horizontal as well as vertical so the lines can be adjusted to the car.



Ajustable guide lines

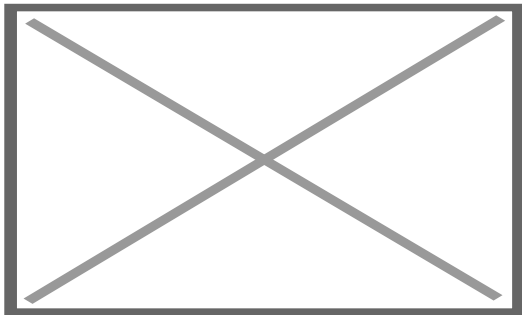
Picture In Picture (PIP)

Camera with Picture in Picture of the Parking assist



Intelligent Park Assist System (IPAS)

The interface have also the Intelligent Park Assist System (iPAS). With this function the guidelines will respond on the steering wheel position. The guide lines are adjustable horizontal and vertical via the interface OSD menu.



Front camera input

Front camera input which will be selected after leaving the reverse gear.

Via the OSD menu you can select show time:

- 3 sec
- 5 sec
- 10 sec
- 15 sec

NOTES

- It is essential to have an Aux-in
- We recommend that the installation will be performed by a qualified specialist
- Check the other tabs for "Compatibility" - "Package contents" - "Product specifications"

LEGAL INFORMATION

The driver of the vehicle should not be inferred from the motion images. In many countries, watching movies while driving is prohibited. Therefore we accept no

responsibility for material or personal injuries, directly or indirectly, due to installation of the interface modules.

Interface and Software basic information:

The NavInc interfaces are no navigation systems or screens to replace the navigation system. The NavInc interfaces enable the possibilities to connect different Audio/Video sources to the navigation system.

Manufacturers create adjusted software and hardware versions, options and enhancements which ensures that the compatibility of the products cannot be guaranteed 100%. Compatibility lists are based on customer feedback and experiences and will constantly be updated for optimal customer support.

COMPATIBILITY

CAR

This kit is compatible with the following models:

Chevrolet

Colorado	2016-20..	R 4.0 IntelliLink / Mylink	with separate radio box (7")
Impala	2016-20..	R 4.0 IntelliLink / Mylink	with separate radio box (7")
Silverado	2016-20..	R 4.0 IntelliLink / Mylink	with separate radio box (7")
Spark	2016-20..	R 4.0 IntelliLink / Mylink	with separate radio box (7")

Opel / Vauxhall

Astra K	2016-20..	R 4.0 IntelliLink	with separate radio box (7")
Karl	2016-03/2018	R 4.0 IntelliLink	with separate radio box (7")
Insignia A	2014-2016	R 4.0 IntelliLink	with separate radio box (7")
Insignia B	2017-06/2018	R 4.0 IntelliLink	with separate radio box (7")

Note:

- Please not that with some cases the picture is upside down so you need a camera which has Vertical/horizontal switch
- It is essential to have an Aux-in when using multimedia source
- We recommend that the installation will be performed by a qualified specialist
- If you have Original Carkit & Audio streaming option via bluetooth, AUX input is not needed

