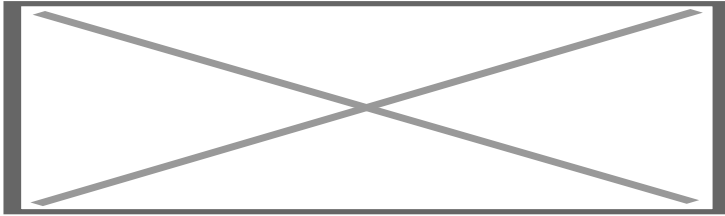


Multimedia video interface Toyota Fujitsu Denso Ten - 64P

Art. Nr: IF-TOY-GV5FDT



DESCRIPTION

General

The NavInc NAVconnect interfaces allow for connecting video sources to the original screen Toyota.

The interface is equipped with various options such as; 1* RGB input, 1* Video input, 1* Front camera input, 1* Rear camera input & 1*LVDS input.

Example video

Features

- 1x RGB / LVDS input (to connectd NAVplay Android)
- 1x Video input
- 1x Rear camera input with iPAS (dynamic parking lines)
- 1x Front camera input (with auto switch OFF)
- Original button support
- Original touchscreen support for NAVplay Android
- Picture while driving
- 2 Year warranty & Support

EXCLUSIVE INTERFACE FEATURES

Features:

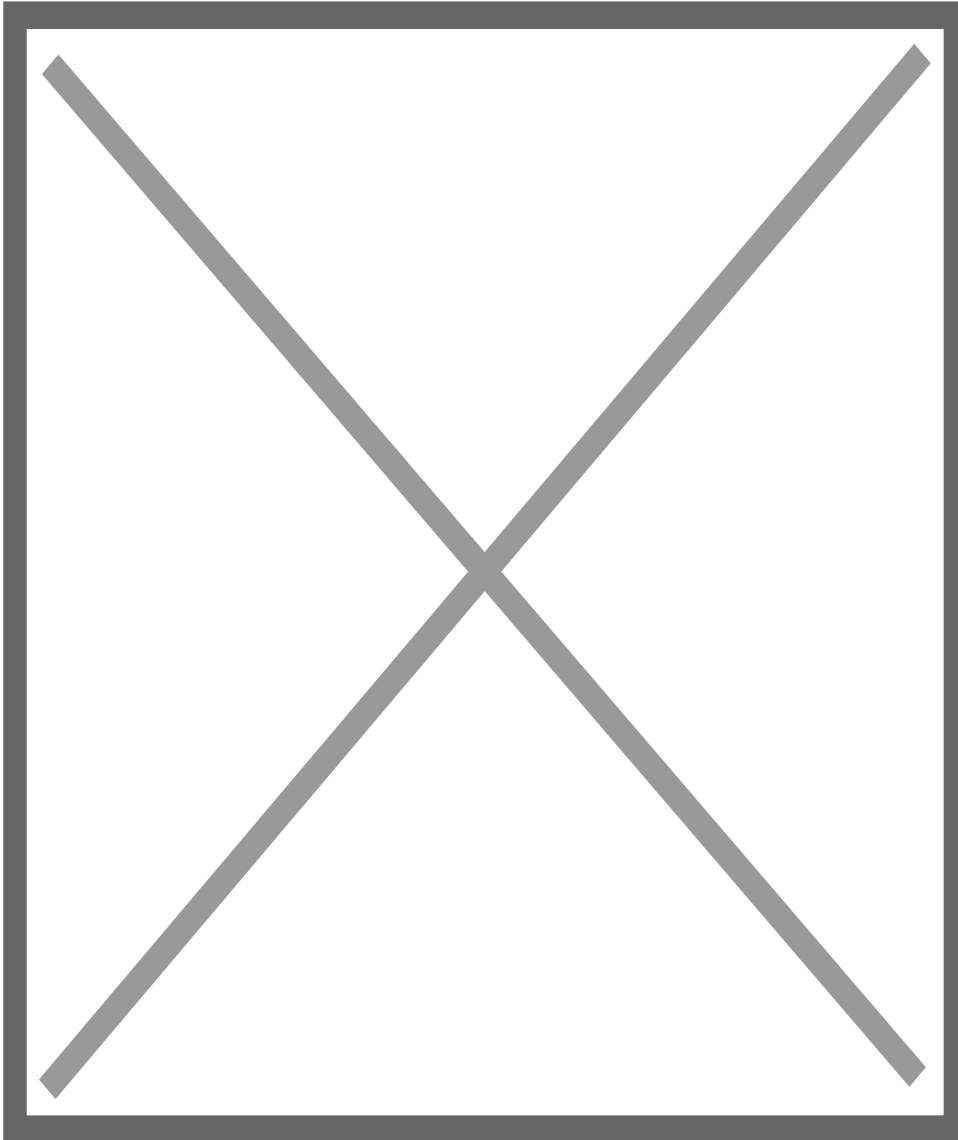
- AV input
- Reverse Camera input

- Front camera input
- Image retention while driving
- Adjustable parking lines
- OSD menu

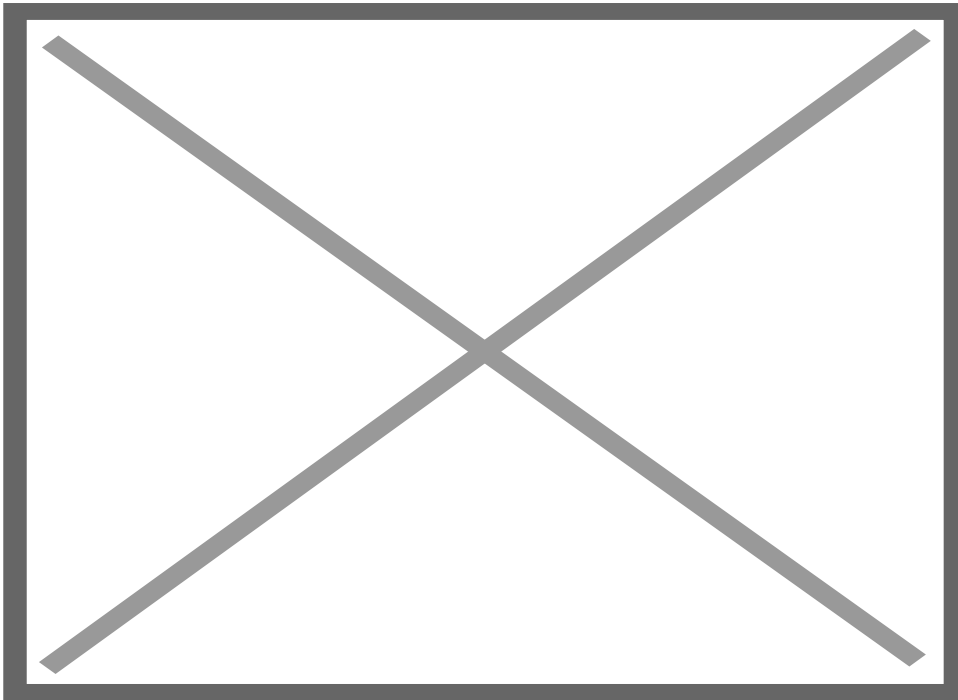
Activation via OEM

Activation interface via original button:

HEAD-UNIT



STEERING WHEEL



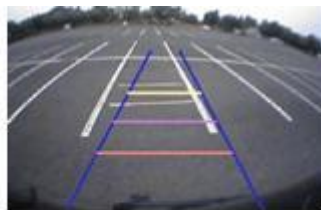
CAMERA FEATURES

Rear camera input with Parking guidelines

Rear camera input with parking guidelines option.

The guidelines makes it much easier to determine the distance to the object you are driving towards.

The guidelines are adjustable horizontal as well as vertical so the lines can be adjusted to the car.



Ajustable guide lines

Front camera input

Front camera input which will be selected after leaving the reverse gear.

Via the OSD menu you can select show time:

0 - 30 seconds

NOTES

- It is essential to have an Aux-in

- We recommend that the installation will be performed by a qualified specialist
- Check the other tabs for "Compatibility" - "Package contents" - "Product specifications"

LEGAL INFORMATION

The driver of the vehicle should not be inferred from the motion images. In many countries, watching movies while driving is prohibited. Therefore we accept no responsibility for material or personal injuries, directly or indirectly, due to installation of the interface modules.

Interface and Software basic information:

The NavInc interfaces are no navigation systems or screens to replace the navigation system. The NavInc interfaces enable the possibilities to connect different Audio/Video sources to the navigation system.

Manufacturers create adjusted software and hardware versions, options and enhancements which ensures that the compatibility of the products cannot be guaranteed 100%. Compatibility lists are based on customer feedback and experiences and will constantly be updated for optimal customer support.

COMPATIBILITY

CAR

This kit is compatible with the following models:

Toyota

Camry	2018-2..	Touch&GO with Panasonic 8" monitor
Corrolla	2018-2..	Touch&GO with Panasonic 8" monitor
RAV4	2018-2..	Touch&GO with Panasonic 8" monitor
Prius	2018-2..	Touch&GO with Panasonic 8" monitor

Note:

- **This kit is only compatible with Panasonic 8"**
- It is essential to have an Aux-in when using multimedia source
- We recommend that the installation will be performed by a qualified specialist
- If you have Original Carkit & Audio streaming option via bluetooth, AUX input is not needed

